

Trumpet in B \flat 1

Tiento del primer tono

Antonio de Cabezón (1510-1566)

Adapt. Ferran Ferrando

$\text{♩} = 100$

mf

8

16 **2**

24 *mf*

31

39 *p*

46 *mf*

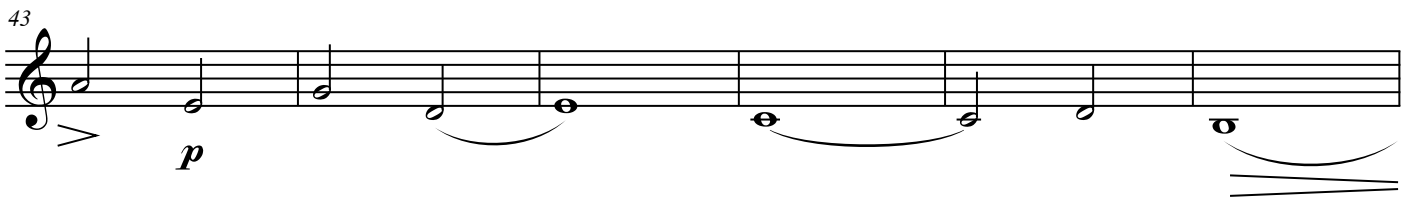
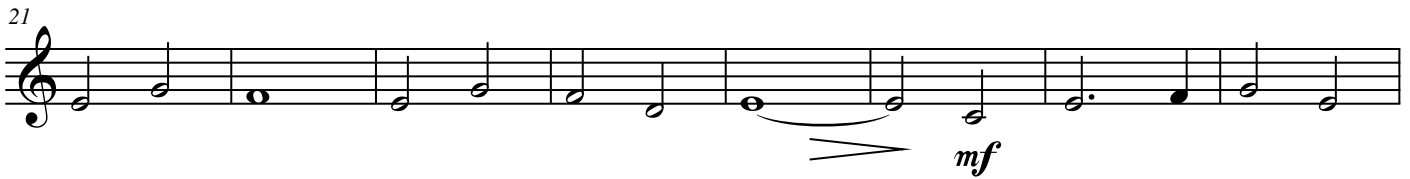
54

Tiento del primer tono

Trumpet in B \flat 2

Antonio de Cabezón (1510-1566)

Adapt. Ferran Ferrando



Tiento del primer tono

Horn in F

Antonio de Cabezón (1510-1566)

Adapt. Ferran Ferrando

mf

8

16 **4**
mf

26 **4**
> mf

36

43 >

48
mf

Tiento del primer tono

Trombone

Antonio de Cabezón (1510-1566)

Adapt. Ferran Ferrando

4

mf

11

mf

18

25

mf

33

40

p

47

mf

54

Tiento del primer tono

Tuba

Antonio de Cabezón (1510-1566)

Adapt. Ferran Ferrando

Musical score for Tuba, Tiento del primer tono by Antonio de Cabezón. The score is in bass clef with a key signature of one flat (B-flat) and a common time signature (C). The piece consists of six staves of music, with measure numbers 8, 15, 25, 33, 41, and 53 indicated at the beginning of each staff. The score includes various musical notations such as rests, notes, slurs, and dynamic markings.

8 *mf*

15 4

25 *mf*

33

41 *p*

47 *mf*

53

♩ = 100

Tiento del primer tono

Antonio de Cabezón (1510-1566)

Adapt. Ferran Ferrando

Trumpet in B \flat 1 *mf*

Trumpet in B \flat 2 *mf*

Horn in F *mf*

Trombone *mf*

Tuba *mf*

B \flat Tpt. 1 *mf*

B \flat Tpt. 2 *mf*

Hn. *mf*

Tbn. *mf*

Tuba *mf*

B \flat Tpt. 1 *mf*

B \flat Tpt. 2 *p*

Hn. *p*

Tbn. *p*

Tuba *p*

B \flat Tpt. 1 *p* *mf*

B \flat Tpt. 2 *mf*

Hn. *mf*

Tbn. *mf*

Tuba *mf*

